

WWW.SPARKLEARTH.COM

# SPARKLEARTH



**SPARKLEARTH HARD ALLOY TECHNOLOGY CO., LTD**

ADDRESS: No. 1, 3<sup>rd</sup> Floor, Building 1, No. 366, North Lakeside Road,  
Chengdu Tianfu New Area of China (Sichuan) Pilot Free Trade Zone.

Tel: +8618030500428

Email: [info@sewearparts.com](mailto:info@sewearparts.com)

# SPARKLEARTH

## *Carbide Inserted Snow Plow Blade*

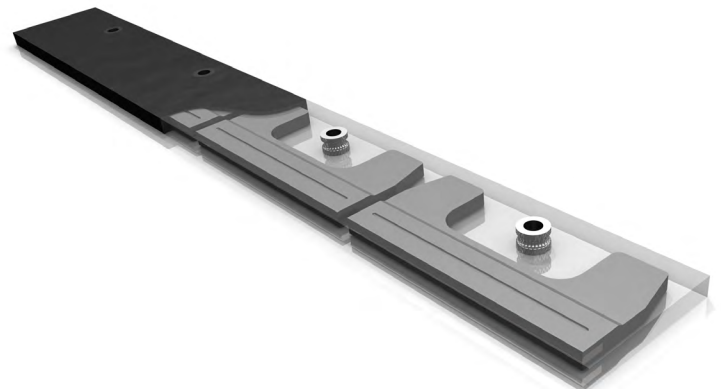
- **LONGER LIFETIME**
- **HIGHER HARDNESS**



Several carbide tips are inserted in the working edge of this C type steel blade, unlike the traditional cutting edge, Because the hard alloy is a sort of metal which performs high hardness and strength, this innovation design lead to a higher hardness and strength compared with the conditional steel cut edge. 3 or 4 this steel blades would be cased in one single snow plow blade

- **SHOCK ABSORB**
- **MINIMISE NOISE**
- **MARK PROTECTION**

C type steel segments are cased by rubber cut edge. Compared with conditional steel cutting edge, this rubber cased cutting edge would be the soft contact instead of the hard-to-hard contact between road (snow)

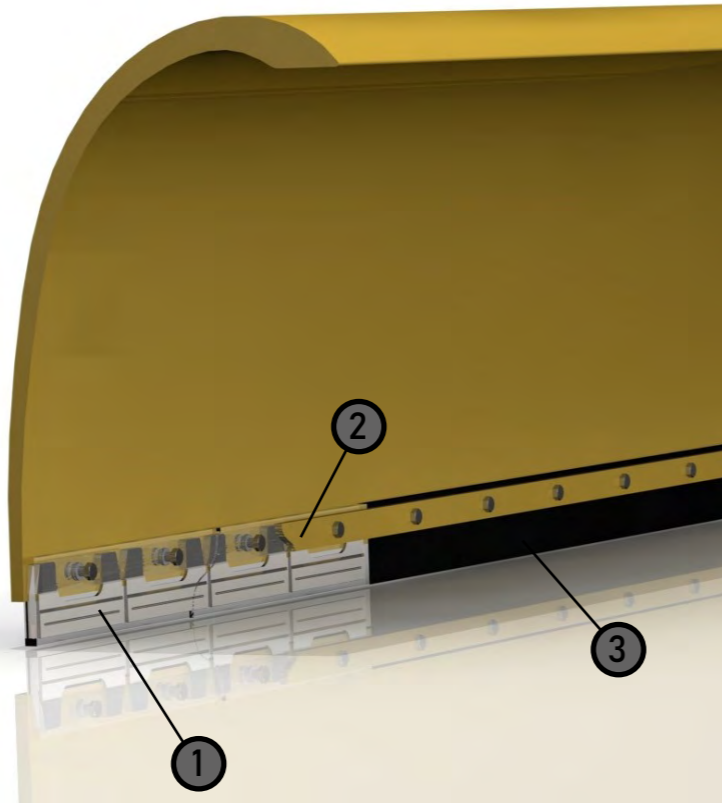


# SPARKLEARTH

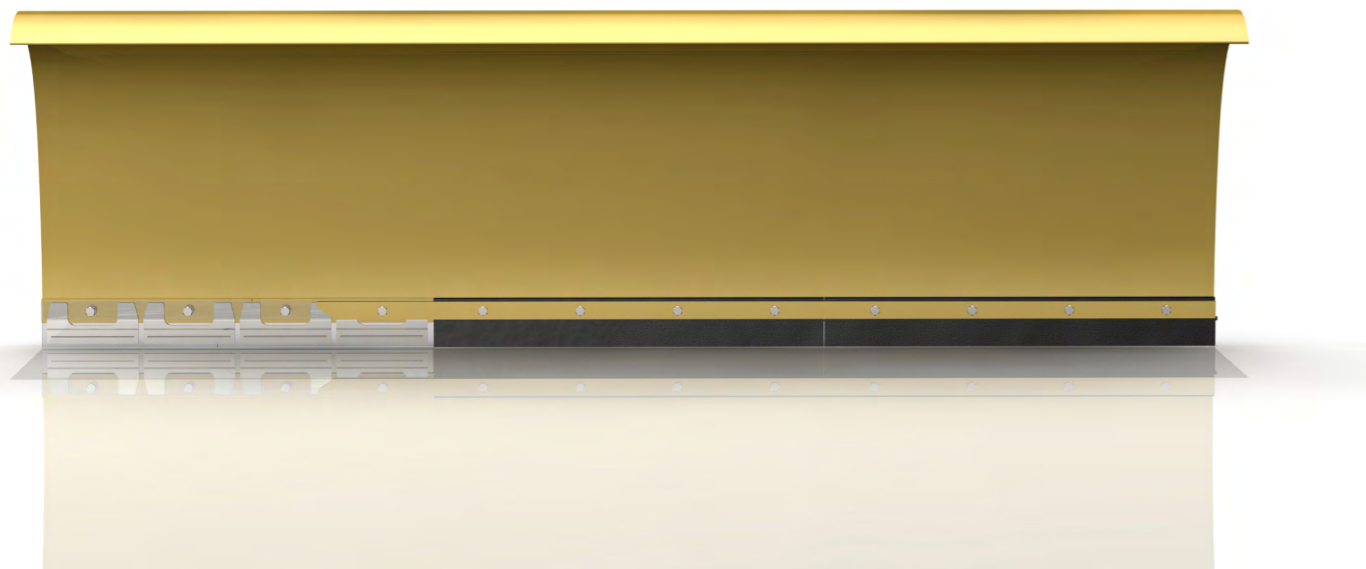
## Carbide Inserted Snow Plow Blade

and snow plow. This transformation can absorb the shock which might damage snow plow and affect the working comfort of crews (by increasing noise and vibration).

On the other hand, this rubber casing cutting edge will deform when the edge meet the road mark, this characteristic would help this



- ① Rubber Cased C type Blade
- ② Support Bar with Location Holes
- ③ Rubber Edge (3" or 4" per Piece)



WWW.SPARKLEARTH.COM



SPARKLEARTH Tech | Chengdu Tianfu New Area of China | 610000



QR Code for wechat:



Chengdu Sparklearth Hard Alloy Technology Co., Ltd reserves the right under its product improvement policy to change construction or design details and furnish equipment when so altered without reference to illustrations or specifications used.

©2019 Chengdu Sparklearth Hard Alloy Technology Co., Ltd All Rights Reserved